

# ANIL OTOMOTIV

Auto Spare Parts Industry

**Anil Otomotiv**  
Oto Yedek Parça Sanayi

## 2024 PRODUCT CATALOGUE



- ◆ IVECO
- ◆ MITSUBISHI
- ◆ ISUZU

+90 (224) 482 44 11

[www.aniloto.net](http://www.aniloto.net)

[info@aniloto.net](mailto:info@aniloto.net)

# ABOUT US

ANIL OTOMOTIV WAS ESTABLISHED IN 1990 WITH THE AIM OF MANUFACTURING AUTOMOTIVE SPARE PARTS IN BURSA AND HAS TAKEN ITS PLACE IN THE SECTOR BY PRODUCING VARIOUS PARTS OF **IVECO**, **MITSUBISHI** AND **ISUZU** COMMERCIAL VEHICLES IN THE FIELDS OF 'PLASTIC PRODUCTS', 'SHEET METAL PRODUCTS' AND MACHINING.



OUR COMPANY, WHICH CURRENTLY HAS A SAY IN ITS FIELD AT MANY POINTS IN TURKEY, AIMS TO PROVIDE THE HIGHEST QUALITY SERVICE BY CONTINUOUSLY INCREASING ITS PRODUCT RANGE AND QUALITY BY CLOSELY MONITORING TECHNOLOGICAL DEVELOPMENTS IN THE SECTOR AND WITHOUT COMPROMISING ON QUALITY.



IN LINE WITH THIS PURPOSE, ANIL OTOMOTIV HAS ADOPTED THE PRINCIPLE OF EXPANDING ITS MOLD DEPARTMENT AND PRODUCTION AREAS ALL OVER THE WORLD WITH SUPERIOR TECHNOLOGY AND MACHINES AND VEHICLES THAT ARE THE PRODUCT OF THIS TECHNOLOGY AND MEETING CURRENT STANDARDS, OUR COMPANY CONTINUES TO SERVE IN ITS NEW FACILITY WITH A CLOSED AREA OF **2500 M2** AND A TOTAL AREA OF **4000 M2** AS OF 2009.



OUR COMPANY HAS CREATED THE BASIC QUALITY POLICY BY INDEXING THE **R&D** STUDIES IT CONTINUES BY CONTINUOUSLY IMPROVING THE SYSTEM QUALITY AND ENSURING ITS CONTINUITY, BY TAKING A CLOSE INTEREST IN THE PERSONAL DECELERATIONS OF ITS EMPLOYEES AND BY INDEXING THEM TO 'CONTINUOUS DEVELOPMENT'. "**MANAGING QUALITY INSTEAD OF CONTROLLING QUALITY**".



+90 (224) 482 44 11



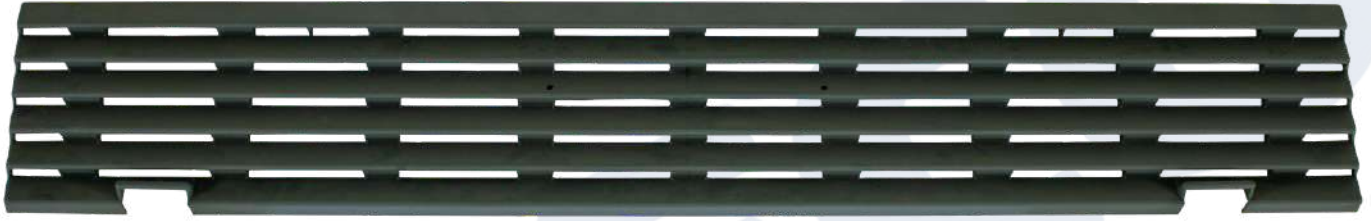
[www.aniloto.net](http://www.aniloto.net)



[info@aniloto.net](mailto:info@aniloto.net)

# IVECO ZETA GROUP

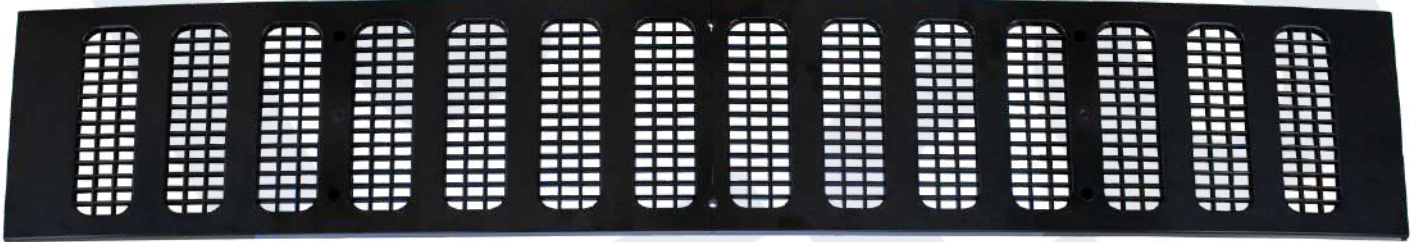




**FRONT SHUTTER**  
**ORIGINAL NO : 9072412**  
**MODEL : 65 9**



**FRONT SHUTTER**  
**ORIGINAL NO : 45205**  
**MODEL : 65 120**



**FRONT SHUTTER OM.**  
**ORIGINAL NO : 9055379**  
**MODEL : 50 NC**



**SHUTTER GRILL MEDIUM**  
**ORIGINAL NO : 21429**  
**MODEL : 65 120**



**SHUTTER GRILL BOTTOM**

**ORIGINAL NO : 21431**

**MODEL : 65 120**



**SHUTTER GRILL TOP**

**ORIGINAL NO : 21432**

**MODEL : 65 120**



**BATTERY FLOOR COVER**

**ORIGINAL NO : 4803499**

**MODEL : 85 12**



**GLASS WASHING TUBE**

**ORIGINAL NO : 8659**

**MODEL : 65 9**



**STEP BODY RIGHT**  
ORIGINAL NO : 9070228  
MODEL : 85 12



**STEP BODY LEFT**  
ORIGINAL NO : 9070229  
MODEL : 85 12



**SPARE WATER TANK**  
ORIGINAL NO : 9073710  
MODEL : 85 12



**SPARE WATER TANK COVER**  
ORIGINAL NO : 93923855  
MODEL : 85 12



**DEFLECTOR LEFT**  
ORIGINAL NO : 9072021  
MODEL : 65 9



**DEFLECTOR RIGHT**  
ORIGINAL NO : 9072020  
MODEL : 65 9



**DOOR GLASS FRAME PROFILE RIGHT**  
ORIGINAL NO : 9063980  
MODEL : 85 14



**DOOR GLASS FRAME PROFILE LEFT**  
ORIGINAL NO : 9063981  
MODEL : 85 14



**HEADLIGHT FRAME LEFT**  
ORIGINAL NO : 11237  
MODEL : 35 9



**HEADLIGHT FRAME RIGHT**  
ORIGINAL NO : 11236  
MODEL : 35 9



**HEADLIGHT FRAME OM. RIGHT**  
ORIGINAL NO : 8962630  
MODEL : 50 NC



**HEADLIGHT FRAME OM. LEFT**  
ORIGINAL NO : 8962631  
MODEL : 50 NC



**HEADLIGHT FRAME COMPLETE NM. RIGHT**  
ORIGINAL NO : 8794  
MODEL : 50 S



**HEADLIGHT FRAME COMPLETE NM. LEFT**  
ORIGINAL NO : 8796  
MODEL : 50 S



**FRONT SIGNAL GLASS WHITE RIGHT**  
ORIGINAL NO : 8962682  
MODEL : 50 NC



**FRONT SIGNAL GLASS WHITE LEFT**  
ORIGINAL NO : 8962683  
MODEL : 50 NC



**FRONT SIGNAL GLASS COLOR RIGHT**  
ORIGINAL NO : 8962682-R  
MODEL : 50 NC



**FRONT SIGNAL GLASS COLOR LEFT**  
ORIGINAL NO : 8962683-R  
MODEL : 50 NC



**FRONT SIGNAL GLASS RIGHT**  
ORIGINAL NO : 8194505-Y  
MODEL : 85 12



**FRONT SIGNAL GLASS LEFT**  
ORIGINAL NO : 8194504-Y  
MODEL : 85 12



**CEILING GABARA LAMP**  
ORIGINAL NO : 14486  
MODEL : 35 65 9



**FENDER SIGNAL RIGHT**  
ORIGINAL NO : 4808927-Y  
MODEL : 85 12



**FENDER SIGNAL LEFT**  
ORIGINAL NO : 4808928-Y  
MODEL : 85 12



**PLATE LAMP RIGHT**  
ORIGINAL NO : 11221  
MODEL : 85 12



**PLATE LAMP LEFT**  
ORIGINAL NO : 11222  
MODEL : 85 12



**SIDE SIGNAL RIGHT**  
ORIGINAL NO : 21395  
MODEL : 75 85



**SIDE SIGNAL LEFT**  
ORIGINAL NO : 21396  
MODEL : 75 85





**SIDE SIGNAL COMPLETE**  
ORIGINAL NO : 1869  
MODEL : 50 75



**SIDE SIGNAL GLASS**  
ORIGINAL NO : 1869-A  
MODEL : 50 75



**GEAR SHIFT KNOB BELLOWS 5 FORWARD  
(GREY)**  
ORIGINAL NO : 25672  
MODEL : 65 9



**GEAR SHIFT KNOB BELLOWS 6 FORWARD  
(GREY)**  
ORIGINAL NO : 26030  
MODEL : 85 14



**GEAR SHIFT KNOB BELLOWS 5 FORWARD  
(KHAKI)**  
ORIGINAL NO : 19753  
MODEL : 85 14



**GEAR SHIFT KNOB BELLOWS 6 FORWARD  
(KHAKI)**  
ORIGINAL NO : 19752  
MODEL : 85 12



**GEAR HANDLE KNOB**  
ORIGINAL NO : 504077630  
MODEL : EUROCARGO



**GEAR ARM RUBBER COMPLETE 5 FORWARD**  
ORIGINAL NO : 8594947  
MODEL : 85 12



**GEAR HANDLE KNOB 5 GEARS (BLACK)**  
ORIGINAL NO : 8355  
MODEL : 50 NC



**GEAR HANDLE KNOB 6 GEARS (KHAKI)**  
ORIGINAL NO : 19678  
MODEL : 85 12



**GEAR HANDLE KNOB 5 GEARS (KHAKI)**  
ORIGINAL NO : 19678-H  
MODEL : 85 12



**GEAR HANDLE KNOB 6 GEARS (GREY)**  
ORIGINAL NO : 26588  
MODEL : M 29 12



**EXTERIOR DOOR HANDLE RIGHT**  
ORIGINAL NO : 10965-A  
MODEL : 65 9



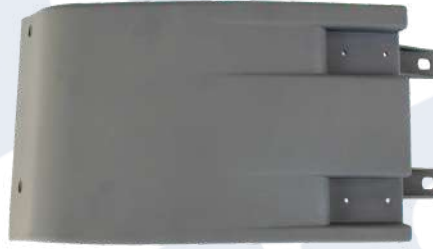
**EXTERIOR DOOR HANDLE LEFT**  
ORIGINAL NO : 10966-A  
MODEL : 65 9



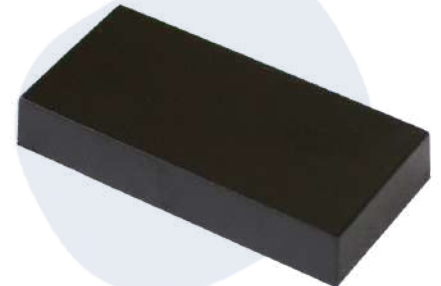
**EXTERIOR DOOR HANDLE NM.**  
ORIGINAL NO : 9071904  
MODEL : 85 14



**SIDE HEADLIGHT COVER RIGHT**  
ORIGINAL NO : 24441  
MODEL : 85 14



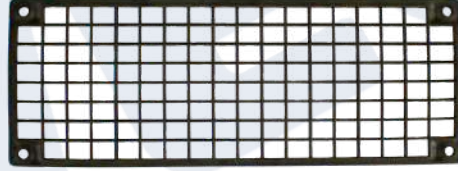
**SIDE HEADLIGHT COVER LEFT**  
ORIGINAL NO : 24442  
MODEL : 85 14



**SIDE HEADLIGHT COVER COVER**  
ORIGINAL NO : 21443  
MODEL : 85 14



**BUMPER CENTER GRILL**  
ORIGINAL NO : 21405  
MODEL : 85 14



**BUMPER SIDE GRILL**  
ORIGINAL NO : 21406  
MODEL : 85 14



**FRONT DEFROST COVER (KHAKI)**  
ORIGINAL NO : 9071633  
MODEL : 85 12



**FRONT DEFROST COVER (GREY)**  
ORIGINAL NO : 25682  
MODEL : 85 14



**FRONT WHEEL GREASE COVER**  
ORIGINAL NO : 8543870  
MODEL : 50 NC



**WATER PUMP (PLASTIC)**  
ORIGINAL NO : 4774405-Y  
MODEL : 85 12



**BUMPER CORNER COATING**  
ORIGINAL NO : 8585455  
MODEL : 65 85



**DOOR PULL PLASTIC OM.**  
ORIGINAL NO : 9056551  
MODEL : 50 NC



**DOOR PULL PLASTIC (KHAKI)**  
ORIGINAL NO : 11448  
MODEL : 65 85



**DOOR PULL PLASTIC (BLACK)**  
ORIGINAL NO : 11448-A  
MODEL : 65 85



**DOOR PULL PLASTIC (GREY)**  
ORIGINAL NO : 27253  
MODEL : 85 14



**CABIN INSIDE HOLDER RIGHT (BLACK)**  
ORIGINAL NO : 9058897  
MODEL : 50 NC



**CABIN INSIDE HOLDER LEFT (BLACK)**  
ORIGINAL NO : 9058898  
MODEL : 50 NC



**CABIN INSIDE HOLDER RIGHT (KHAKE)**  
ORIGINAL NO : 9071615  
MODEL : 65 85



**CABIN INSIDE HOLDER LEFT (KHAKE)**  
ORIGINAL NO : 9071616  
MODEL : 65 85



**CABIN INSIDE HOLDER RIGHT (GREY)**  
ORIGINAL NO : 25658  
MODEL : 85 14



**CABIN INSIDE HOLDER LEFT (GREY)**  
ORIGINAL NO : 25659  
MODEL : 85 14



**CEILING HANDLE (BLACK)**  
ORIGINAL NO : 9057933  
MODEL : 65 85



CEILING HANDLE (KHKK)  
ORIGINAL NO : 9071609  
MODEL : 85 12



CEILING HANDLE (GREY)  
ORIGINAL NO : 25660  
MODEL : 85 14



FRONT FENDER TIRE (IVECO) SINGLE  
ORIGINAL NO : 10381  
MODEL : 65 9



REAR MUDGUARD RUBBER (IVECO) SINGLE  
ORIGINAL NO : 9184  
MODEL : 65 9



FRONT FENDER TIRE (OTOYOL) SINGLE  
MODEL : 50 NC



REAR MUDGUARD RUBBER (OTOYOL) SINGLE  
ORIGINAL NO : 5033  
MODEL : M 23



IVECO WRITING BANDED  
ORIGINAL NO : 23363  
MODEL : 80 12



IVECO FONT COMPLETE  
ORIGINAL NO : 9073951  
MODEL : 65 9



IVECO FONT  
ORIGINAL NO : 93936811  
MODEL : 75 14

**Otoyol**

OTOYOL LETTER BIG NM.  
ORIGINAL NO : 9126  
MODEL : 35 NC

**Otoyol**

OTOYOL LETTER NM.  
ORIGINAL NO : 9123  
MODEL : 50 S

**Otoyol**

OTOYOL REAR BUMPER WRITING  
ORIGINAL NO : 13832  
MODEL : 85 14

**Otoyol**

OTOYOL LETTER (SMALL TAPE)  
ORIGINAL NO : 21453  
MODEL : 85 14

**FIAT**

FIAT WRITING OM.  
ORIGINAL NO : 4675179  
MODEL : 50 NC

**FIAT**

FIAT WRITING NM.  
ORIGINAL NO : 9122  
MODEL : 50 S

**Turbo**

TURBO WRITING  
ORIGINAL NO : 9073274  
MODEL : 85 12

**50 NC**

50 NC WRITING OM.  
ORIGINAL NO : 9056176  
MODEL : 50 NC

**50NC**

50 NC DOOR WRITING NM.  
ORIGINAL NO : 9124  
MODEL : 50 S

**35NC**

35 NC DOOR WRITING NM.  
ORIGINAL NO : 9125  
MODEL : 35 NC

**M 23**

M 23 DOOR WRITING NM.  
ORIGINAL NO : 9344  
MODEL : M 23

**M 25**

M 25 DOOR WRITING NM.  
ORIGINAL NO : 11549  
MODEL : M 25

**35-9**

35-9 DOOR WRITING NM.  
ORIGINAL NO : 10980  
MODEL : 35 9

**65-9**

65-9 DOOR WRITING NM.  
ORIGINAL NO : 9072316  
MODEL : 65 9

**75-12**

75-12 DOOR WRITING NM.  
ORIGINAL NO : 15571  
MODEL : 75 12

**80-12**

80-12 DOOR WRITING NM.  
ORIGINAL NO : 23563  
MODEL : 80 12

**85-12**

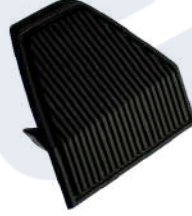
85-12 DOOR WRITING NM.  
ORIGINAL NO : 9072759  
MODEL : 85 12

**85-14**

85-14 DOOR WRITING NM.  
ORIGINAL NO : 18166  
MODEL : 85 14

### 120-14

**120-14 DOOR WRITING NM.**  
ORIGINAL NO : 19956  
MODEL : 120 14



**STEERING COVER BLACK OM.**  
ORIGINAL NO : 9051273-K  
MODEL : 50 NC



**STEERING COVER KHAKI NM.**  
ORIGINAL NO : 93918435  
MODEL : 65 9



**STEERING COVER GREY NM.**  
ORIGINAL NO : 25884  
MODEL : 85 14



**DOOR OPENING HANDLE (KHAKI)**  
ORIGINAL NO : 10817  
MODEL : 85 12



**DOOR OPENING HANDLE (GREY)**



**DOOR OPENING HANDLE (BLACK)**  
ORIGINAL NO : 35288  
MODEL : 120 14



**GLASS OPENING HANDLE (KHAKI)**  
ORIGINAL NO : 10819  
MODEL : 85 12

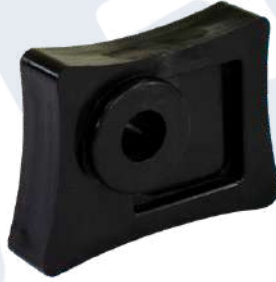


**GLASS OPENING HANDLE (GREY)**





**GLASS OPENING HANDLE (BLACK)**  
ORIGINAL NO : 34163  
MODEL : 85 12



**SEAT ADJUSTMENT PLASTIC**  
ORIGINAL NO : A-166  
MODEL : 50 NC



**LOCK CONTROL ARM BEARING**  
ORIGINAL NO : 4694834  
MODEL : 65 9



**DOOR INTERIOR LOCKING BUTTON**  
ORIGINAL NO : 4108831  
MODEL : 50 NC



**DOOR INTERIOR LOCKING BUTTON BEARING**  
ORIGINAL NO : 4108831-A  
MODEL : 50 NC



**DOOR INSIDE LOCKING BAR FIBER**  
MODEL : 50 NC



**DEFLECTOR ANCHOR FOUR CORNER (SMALL)**  
ORIGINAL NO : 4484838  
MODEL : 80 12



**DEFLECTOR ANCHOR FOUR CORNER (LARGE)**  
ORIGINAL NO : 9072097  
MODEL : 120 14



**DEFLECTOR ANCHOR (SMALL)**  
ORIGINAL NO : 10398  
MODEL : 65 9



**DEFLECTOR ANCHOR (LARGE)**  
ORIGINAL NO : 10399  
MODEL : 65 9



**DOOR FLOORING ANCHOR**  
ORIGINAL NO : 9368  
MODEL : 65 9



**BUMPER CORNER CLOSING ANCHOR**  
ORIGINAL NO : 14592086  
MODEL : 65 9



**SIDE INSIDE COAT ANCHOR (LIGHT GREY)**  
ORIGINAL NO : 14592087  
MODEL : 65 9



**SIDE INSIDE COAT ANCHOR (DARK GREY)**  
ORIGINAL NO : 14592186  
MODEL : 65 9



**HOOD SEAL ANCHOR**  
ORIGINAL NO : 93909456  
MODEL : 85 12



**MOP ANCHOR**  
ORIGINAL NO : 14590887  
MODEL : 65 9



**SOLAR SUPPORT ANCHOR**  
ORIGINAL NO : 15377  
MODEL : 75 12



**KILOMETER FIBER**  
ORIGINAL NO : 4615079  
MODEL : 50 NC



**EXTERIOR REARVIEW MIRROR (BLACK)**  
ORIGINAL NO : 8836  
MODEL : 50 NC



**EXTERIOR REARVIEW MIRROR (KHKD)**  
ORIGINAL NO : 10733  
MODEL : 85 12



**EXTERIOR REARVIEW MIRROR (RESISTANCE)**  
ORIGINAL NO : 34670  
MODEL : 85 14



**WIDE-ANGLE RETURN MIRROR**  
ORIGINAL NO : 34671  
MODEL : 85 14



**DOOR UPPER LIFT MIRROR**  
ORIGINAL NO : 34672  
MODEL : 85 14



**DASHBOARD (TRUCK)**  
ORIGINAL NO : 35646  
MODEL : 85 14



**DASHBOARD (BUS)**  
ORIGINAL NO : 32290  
MODEL : M 29



**CABIN INTERIOR POLE COATING OM. (GREY R)**  
ORIGINAL NO : 25663  
MODEL : 85 12



**CABIN INTERIOR POLE COATING OM. (GREY L)**  
ORIGINAL NO : 25664  
MODEL : 85 12



**CABIN INTERIOR POLE COATING OM.(KHAKI R)**  
ORIGINAL NO : 9071628  
MODEL : 65 9



**CABIN INTERIOR POLE COATING OM.(KHAKI L)**  
ORIGINAL NO : 9071629  
MODEL : 65 9



**CABIN INTERIOR POLE COATING OM. (GREY R)**  
ORIGINAL NO : 42808  
MODEL : 120 14



**CABIN INTERIOR POLE COATING OM. (GREY L)**  
ORIGINAL NO : 42809  
MODEL : 120 14



**DOOR SILL PROFILE (GREY RIGHT)**  
ORIGINAL NO : 27854



**DOOR SILL PROFILE (GREY LEFT)**  
ORIGINAL NO : 27855



**VOLANT HOUSING POWDER HAIR (PLASTIC)**  
ORIGINAL NO : 98420744



**VENTILATOR WING (6 HOLES)**  
ORIGINAL NO : 18425  
MODEL : 85 12 120 14



**VENTILATOR WING (4 HOLES)**  
ORIGINAL NO : 98468663  
MODEL : M 14



**VENTILATOR WING**  
**ORIGINAL NO : 4800473**  
**MODEL : 65 9**



**VENTILATOR WING NM.**  
**ORIGINAL NO : 4616572**  
**MODEL : 50 NC**



**VENTILATOR WING OM.**  
**ORIGINAL NO : 5616572**  
**MODEL : 50 NC**



**WATER FOUNTAIN NOZZLE OM.**  
**ORIGINAL NO : A-111**  
**MODEL : 50 NC**



**WATER FOUNTAIN NOZZLE NM.**  
**ORIGINAL NO : 5954790**  
**MODEL : 65 9**



**WIPER MECHANISM COMPLETE**  
ORIGINAL NO : 8392  
MODEL : 65 85



**ROUTE PIPE**  
ORIGINAL NO : 8558585  
MODEL : 50 NC



**ROUTE PIPE**  
ORIGINAL NO : 8558585-N  
MODEL : 35 NC



**ROUTE PIPE**  
ORIGINAL NO : 8558585-M  
MODEL : M 23



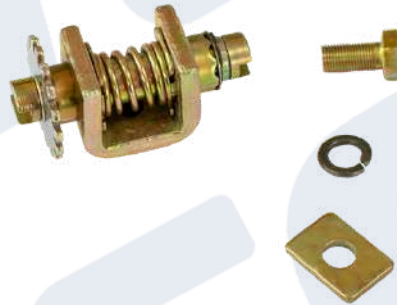
**ROUTE PIPE**  
ORIGINAL NO : 8558585-C  
MODEL : 65 9



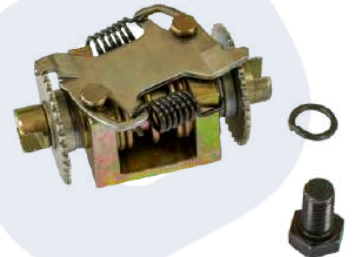
**ROUTE PIPE**  
ORIGINAL NO : 8558585-Y  
MODEL : M 25



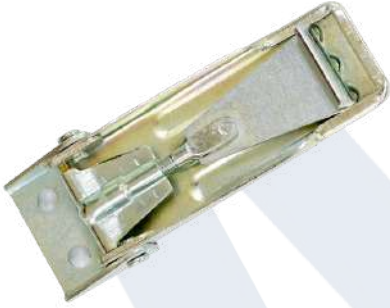
**CENTER ROUTE PIPE**  
ORIGINAL NO : 8564756  
MODEL : MUS



**BRAKE ADJUSTMENT MECHANISM OM.**  
ORIGINAL NO : 8528686  
MODEL : 50 NC



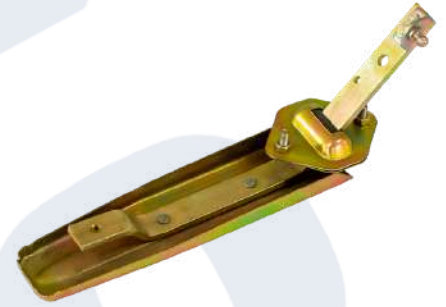
**BRAKE ADJUSTMENT MECHANISM NM.**  
ORIGINAL NO : 7170420-Y  
MODEL : 65 85



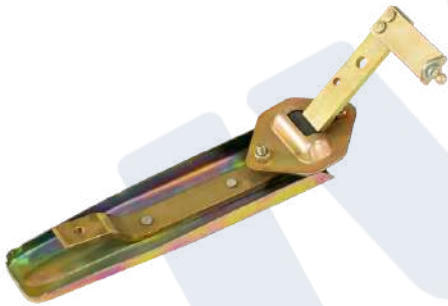
**ENGINE HOOD LATCH (SMALL)**  
ORIGINAL NO : 9052893  
MODEL : 50 NC



**ENGINE HOOD LATCH (LARGE)**  
ORIGINAL NO : 9052661  
MODEL : 50 NC



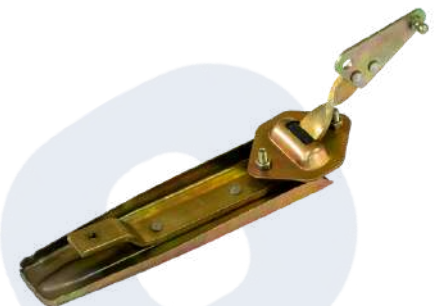
**GAS PEDAL OM.**  
ORIGINAL NO : 8556914  
MODEL : 50 NC



**GAS PEDAL OM.**  
ORIGINAL NO : 6303  
MODEL : M 23



**GAS PEDAL 89 MODEL**  
ORIGINAL NO : 7746  
MODEL : 50 S



**GAS PEDAL IVECO**  
ORIGINAL NO : 8598369  
MODEL : 65 85



**GAS PEDAL**  
ORIGINAL NO : 33724  
MODEL : 80 12



**EXHAUST BRAKE CYLINDER BRACKET**  
ORIGINAL NO : 8198165-Y  
MODEL : 85 12



**EXHAUST CLAMP (CASTING)**  
ORIGINAL NO : 12093  
MODEL : 65 9



**EXHAUST BRAKE HEAD**  
ORIGINAL NO : A-225  
MODEL : 65 85



**EXHAUST BRAKE HEAD (LARGE)**  
ORIGINAL NO : A-225  
MODEL : 65 85



**MIRROR HANDLE NM. R (BLACK)**  
ORIGINAL NO : 8837  
MODEL : 50 65



**MIRROR HANDLE NM. L (BLACK)**  
ORIGINAL NO : 8838  
MODEL : 50 65



**MIRROR HANDLE NM. R (KHAKI)**  
ORIGINAL NO : 10734  
MODEL : 65 85



**MIRROR HANDLE NM. L (KHAKI)**  
ORIGINAL NO : 10735  
MODEL : 65 85



**MIRROR HANDLE NM. R (RESISTANCE)**  
ORIGINAL NO : 34892  
MODEL : 85 14



**MIRROR HANDLE NM. L (RESISTANCE)**  
ORIGINAL NO : 34891  
MODEL : 85 14



**MIRROR HANDLE BOTTOM CONNECTION NM.**  
(BLACK)  
ORIGINAL NO : 9054923-A  
MODEL : 50 65





**MIRROR HANDLE BOTTOM CONNECTION NM.  
(KHAKE)**  
ORIGINAL NO : 10734-B  
MODEL : 65 85



**MIRROR HANDLE TOP CONNECTION R (BLACK)**  
ORIGINAL NO : 9059707-A  
MODEL : 50 65



**MIRROR HANDLE TOP CONNECTION L (BLACK)**  
ORIGINAL NO : 9059707-B  
MODEL : 50 65



**MIRROR HANDLE TOP CONNECTION R (KHAKE)**  
ORIGINAL NO : 10734-C  
MODEL : 65 85



**MIRROR HANDLE TOP CONNECTION L (KHAKE)**  
ORIGINAL NO : 10734-D  
MODEL : 65 85



**BUTTERFLY GLASS FRAME R**  
ORIGINAL NO : 9052932  
MODEL : 50 NC



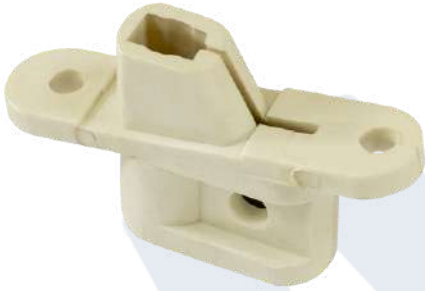
**BUTTERFLY GLASS FRAME L**  
ORIGINAL NO : 9052933  
MODEL : 50 NC



**BUTTERFLY GLASS FRAME R**  
ORIGINAL NO : 9063346  
MODEL : 65 85



**BUTTERFLY GLASS FRAME L**  
ORIGINAL NO : 9063347  
MODEL : 65 85



**BUTTERFLY GLASS FRAME SPORT PLASTIC**  
ORIGINAL NO : 9053809  
MODEL : 65 9



**BUTTERFLY FOR GLASS LATCH**  
ORIGINAL NO : 93911459  
MODEL : 85 14



**BUTTERFLY GLASS LATCH R (BLACK)**  
ORIGINAL NO : 9465  
MODEL : 50 85



**BUTTERFLY GLASS LATCH L (BLACK)**  
ORIGINAL NO : 9466  
MODEL : 50 85



**BUTTERFLY GLASS SCREW**  
ORIGINAL NO : 14089801  
MODEL : 50 85



**DOOR GLASS FRAME R**  
ORIGINAL NO : 8284  
MODEL : 50 85



**DOOR GLASS FRAME L**  
ORIGINAL NO : 8284  
MODEL : 50 85



**REAR WINDOW DUCT**  
ORIGINAL NO : 9052883  
MODEL : 50 85



**GLASS CARRYING CHANNEL**  
ORIGINAL NO : 3996  
MODEL : 50 85



**DOOR STRAP SET**  
ORIGINAL NO : 7191  
MODEL : M 23



**DOOR STRAP SINGLE**  
ORIGINAL NO : 7191-A  
MODEL : M 23



**DOOR STRETCH SPORT R**  
ORIGINAL NO : 9053091  
MODEL : 50 NC



**DOOR STRETCH SPORT L**  
ORIGINAL NO : 9053092  
MODEL : 50 NC



**DOOR STRAP HANDLE**  
ORIGINAL NO : 49719  
MODEL : 85 14



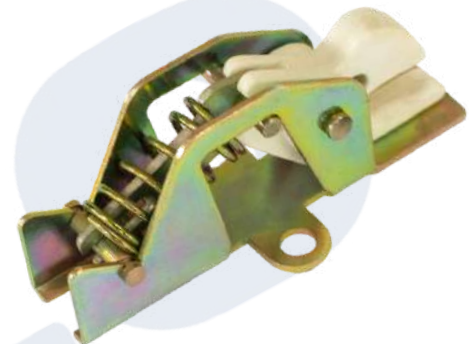
**DOOR STRAP HANDLE ROLLER**  
ORIGINAL NO : 4632292  
MODEL : 65 85



**DOOR STRAP HANDLE PIN (SMALL)**  
ORIGINAL NO : 4632295  
MODEL : 65 85



**DOOR STRAP HANDLE PIN (LARGE)**  
ORIGINAL NO : 4632296  
MODEL : 65 85



**SHUTTER LOCK (PLASTIC)**  
ORIGINAL NO : 4655364  
MODEL : 65 85



**SHUTTER LOCK (METAL)**  
ORIGINAL NO : 4655364-M  
MODEL : 65 85



**AIR TUBE CARRIER BELT**  
ORIGINAL NO : 8798642  
MODEL : 85 12



**FUEL TANK LEG**  
ORIGINAL NO : 17274-A  
MODEL : 50 85



**FUEL TANK BELT**  
ORIGINAL NO : 251330000  
MODEL : 50 85



**FUEL TANK BELT**  
ORIGINAL NO : 14998  
MODEL : 120 14 M 29



**HAND BRAKE FORK**  
ORIGINAL NO : 8562385  
MODEL : 50 85



**HAND BRAKE ROLLER**  
ORIGINAL NO : 8562390  
MODEL : 50 65



**HAND BRAKE ROLL BOLT**  
ORIGINAL NO : 8562392  
MODEL : 50 65



**BRAKE NAIL REPAIR KIT OM.**  
ORIGINAL NO : 8528627  
MODEL : 50 NC



**BRAKE NAIL REPAIR KIT NM.**  
ORIGINAL NO : 7165210-A  
MODEL : 65 9



**BRAKE TRAY SPRING AND WAKES (KIT)**  
ORIGINAL NO : 7165204-08  
MODEL : 50 NC



**TRANSMISSION SPRING HEAD (SMALL)**  
ORIGINAL NO : 4556906-Y  
MODEL : 50 NC



**TRANSMISSION SPRING HEAD (LARGE)**  
ORIGINAL NO : 4582242-Y  
MODEL : 50 NC



**CLUTCH BOTTOM ADJUSTMENT BAR OM.**  
ORIGINAL NO : 4159404  
MODEL : 50 NC



**CLUTCH BOTTOM ADJUST NUT OM.**  
ORIGINAL NO : 16102311  
MODEL : 50 NC



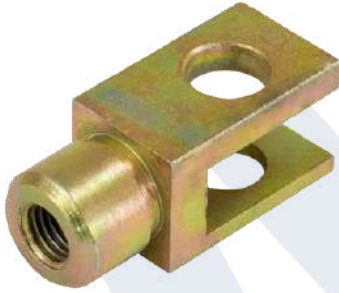
**CLUTCH BOTTOM ADJUSTMENT BAR NM.**  
ORIGINAL NO : 8584072  
MODEL : 65 85



**CLUTCH BOTTOM ADJUST NUT NM.**  
ORIGINAL NO : 8789510  
MODEL : 65 85



**CLUTCH MAIN CENTER ADJUSTING BAR**  
ORIGINAL NO : 8586050  
MODEL : 50 NC



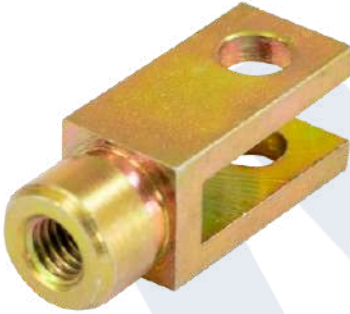
**CLUTCH MAIN CENTER BRANCH**  
ORIGINAL NO : 8585472  
MODEL : 50 NC



**CLUTCH FORK PIN OM.**  
ORIGINAL NO : 4593876  
MODEL : 50 NC



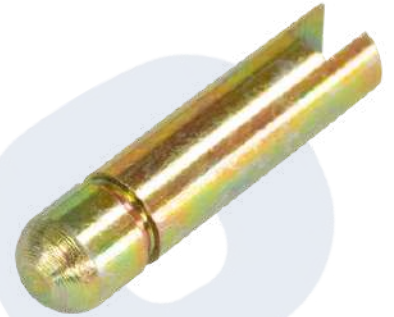
**BRAKE ADDITION RECORD**  
ORIGINAL NO : 4545094  
MODEL : 65 9



**BRAKE MAIN CENTER FORK**  
ORIGINAL NO : 8551160  
MODEL : 50 NC



**BRAKE MAIN CENTER ADJUSTING BAR**  
ORIGINAL NO : 8551161  
MODEL : 50 NC



**BRAKE CYLINDER PIN OM.**  
ORIGINAL NO : 8550799  
MODEL : 50 NC



**BRAKE CYLINDER PIN NM.**  
ORIGINAL NO : 7165214  
MODEL : 65 9



**GAS HEAD (SMALL)**  
ORIGINAL NO : 4230891  
MODEL : 50 NC



**GAS HEAD (LARGE)**  
ORIGINAL NO : 10124311  
MODEL : 50 NC



**GAS HEADER JOINT**  
ORIGINAL NO : 38563930  
MODEL : 50 NC



**GAS HEADER RING**  
ORIGINAL NO : 10124776  
MODEL : MÜST



**SHOCK ABSORBER CONNECTION BOLT  
(SMALL)**  
ORIGINAL NO : 547231  
MODEL : 50 NC



**SHOCK ABSORBER CONNECTION BOLT  
(LARGE)**  
ORIGINAL NO : 547232  
MODEL : 50 NC



**HAND BRAKE ADJUSTMENT SLIP (SMALL-  
REAR)**  
ORIGINAL NO : 10090811  
MODEL : 50 NC



**HAND BRAKE ADJUSTMENT SLIP (LARGE-  
FRONT)**  
ORIGINAL NO : 38562391  
MODEL : 50 NC



**EXHAUST STUD NM.**  
ORIGINAL NO : 11107621  
MODEL : 50 S



**EXHAUST STUD OM.**  
ORIGINAL NO : 13543410  
MODEL : 50 NC



**EXHAUST YELLOW NUT**  
ORIGINAL NO : 4230555  
MODEL : 50 NC



**CULTURAL COVER STUD**  
ORIGINAL NO : 4654366  
MODEL : 50 NC



**CULTURAL COVER STUD NUT**  
ORIGINAL NO : 4654367  
MODEL : 50 NC



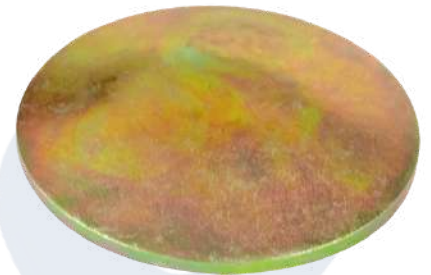
**BALL PERNO KNOB**  
ORIGINAL NO : 14297  
MODEL : 85 12



**CARTRIDGE**  
ORIGINAL NO : 547232  
MODEL : 50 NC



**CARTRIDGE COPPER WASHER**  
ORIGINAL NO : 10263460  
MODEL : 50 NC



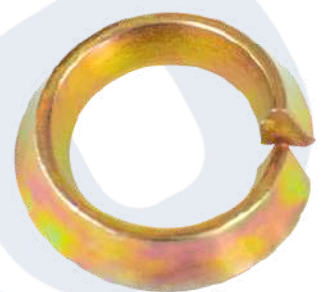
**CAMSHAFT HEAD**  
ORIGINAL NO : 10460701  
MODEL : 50 NC



**FRONT AXLE LUBRICATING**  
ORIGINAL NO : 7164257  
MODEL : 50 NC



**WHEEL HIGH (FLAT)**  
ORIGINAL NO : 8527735  
MODEL : 50 NC



**WHEEL HIGH (SPRING)**  
ORIGINAL NO : 8527733  
MODEL : 50 NC





**RADIATOR CONNECTION BAR R**  
ORIGINAL NO : 8557311  
MODEL : 50 NC



**RADIATOR CONNECTION BAR L**  
ORIGINAL NO : 8557312  
MODEL : 50 NC



**LOCK CONTROL BAR R**  
ORIGINAL NO : 8000  
MODEL : 50 85



**LOCK CONTROL BAR L**  
ORIGINAL NO : 8001  
MODEL : 50 85



**LOCK PUSHING BAR (LARGE)**  
ORIGINAL NO : 9053824  
MODEL : 50 NC



**DOOR INSIDE LOCK PUSHING BAR (PLASTIC)**  
ORIGINAL NO : 9053829  
MODEL : 50 NC



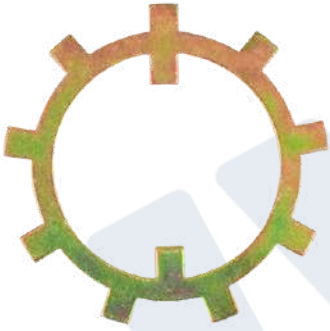
**FRONT AXLE ADJUSTMENT RAIL (KIT)**  
ORIGINAL NO : 4667823-S  
MODEL : 50 NC



**AXLE GEAR WASHER**  
ORIGINAL NO : 540710  
MODEL : 50 NC



**WASTE WATER**  
ORIGINAL NO : 540712  
MODEL : 50 NC



**REAR WHEEL CONTROLLER WASHER**  
ORIGINAL NO : 8515168  
MODEL : 50 NC



**FRONT WHEEL CONTROLLER WASHER**  
ORIGINAL NO : 8558083  
MODEL : 50 NC



**MAHRUTİ GLASSES ASFALYA**  
ORIGINAL NO : 8533357  
MODEL : 50 NC



**FRONT SHUTTER MOUNTING CLIP**  
ORIGINAL NO : 98405391  
MODEL : 85 14



**GEAR ARM SPORT TK LOWER UPPER**  
ORIGINAL NO : 13700-TK  
MODEL : 65-9/85-12/120-14



**STOP WIRE**  
ORIGINAL NO : 8563578-B  
MODEL : 50 NC



**HAND BRAKE ROPE FRONT**  
ORIGINAL NO : 4647  
MODEL : 35 NC  
LENGTH : 1.375 MM.



**HAND BRAKE ROPE FRONT**  
ORIGINAL NO : 8559320  
MODEL : 50 NC  
LENGTH : 1.915 MM.



**HAND BRAKE ROPE FRONT**  
ORIGINAL NO : 11263  
MODEL : 35 9  
LENGTH : 4.575 MM.



**HAND BRAKE ROPE FRONT 2000 MODEL**  
ORIGINAL NO : 31543  
MODEL : 35 9  
LENGTH : 5.185 MM.



**HAND BRAKE ROPE FRONT**  
ORIGINAL NO : 8572815  
MODEL : 65 9  
LENGTH : 5.025 MM.



**HAND BRAKE ROPE FRONT**  
ORIGINAL NO : 10182  
MODEL : 65 9  
LENGTH : 5.075 MM.



**HAND BRAKE ROPE FRONT**  
ORIGINAL NO : 10380  
MODEL : 65 9  
LENGTH : 5.445 MM.



**HAND BRAKE ROPE FRONT**  
ORIGINAL NO : 15590  
MODEL : 75 12  
LENGTH : 5.445 MM.



**HAND BRAKE ROPE FRONT**  
ORIGINAL NO : 23770  
MODEL : 80 12  
LENGTH : 5.630 MM.



**HAND BRAKE ROPE FRONT HELP**  
ORIGINAL NO : 8595720  
MODEL : 85 12  
LENGTH : 835 MM.



**HAND BRAKE ROPE FRONT HELP**  
ORIGINAL NO : 26202  
MODEL : 120 14  
LENGTH : 1.060 MM.



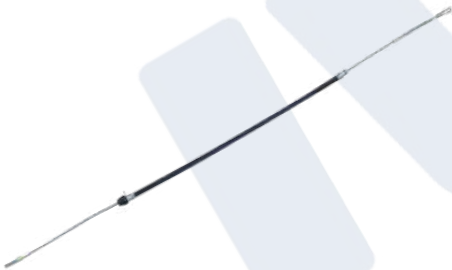
**HAND BRAKE ROPE FRONT**  
ORIGINAL NO : 7281  
MODEL : M 23  
LENGTH : 2.510 MM.



**HAND BRAKE ROPE FRONT**  
ORIGINAL NO : 43761  
MODEL : M 23 9 M 24 9  
LENGTH : 785 MM.



**HAND BRAKE ROPE FRONT**  
ORIGINAL NO : 20832  
MODEL : M 23 12 M 29  
LENGTH : 2.430 MM.



**HAND BRAKE ROPE FRONT**  
ORIGINAL NO : 18330  
MODEL : M 23 12  
LENGTH : 2.385 MM.



**HAND BRAKE ROPE FRONT**  
ORIGINAL NO : 11124  
MODEL : M 25  
LENGTH : 3.210 MM.



**HAND BRAKE ROPE FRONT**  
ORIGINAL NO : 16986  
MODEL : M 29  
LENGTH : 3.750 MM.



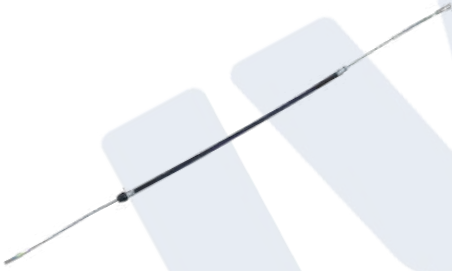
**HAND BRAKE ROPE FRONT**  
ORIGINAL NO : 39389  
MODEL : EUROBUS  
LENGTH : 1.075 MM.



**HAND BRAKE ROPE FRONT LARGE**  
ORIGINAL NO : 39388  
MODEL : EUROBUS  
LENGTH : 1.335 MM.



**HAND BRAKE ROPE REAR RIGHT OM.**  
ORIGINAL NO : 4670  
MODEL : 35 NC  
LENGTH : 1.265 MM.



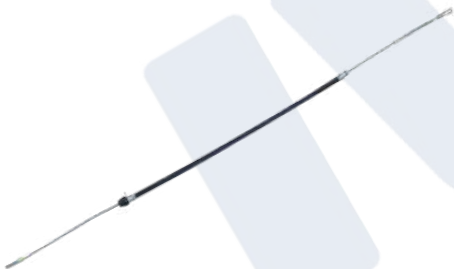
**HAND BRAKE ROPE REAR RIGHT NM.**  
ORIGINAL NO : 8260  
MODEL : 35 NC  
LENGTH : 1.285 MM.



**HAND BRAKE ROPE REAR LEFT NM.**  
ORIGINAL NO : 8266  
MODEL : 35 NC  
LENGTH : 1.780 MM.



**HAND BRAKE ROPE REAR RIGHT OM.**  
ORIGINAL NO : 8559327  
MODEL : 50 NC  
LENGTH : 1.168 MM.



**HAND BRAKE ROPE REAR LEFT OM.**  
ORIGINAL NO : 8559329  
MODEL : 50 NC  
LENGTH : 1.755 MM.



**HAND BRAKE ROPE REAR RIGHT NM.**  
ORIGINAL NO : 8571646  
MODEL : 50 NC 65 9  
LENGTH : 1.190 MM.



**HAND BRAKE ROPE REAR LEFT NM.**  
ORIGINAL NO : 8571648  
MODEL : 50 NC 65 9  
LENGTH : 1.780 MM.



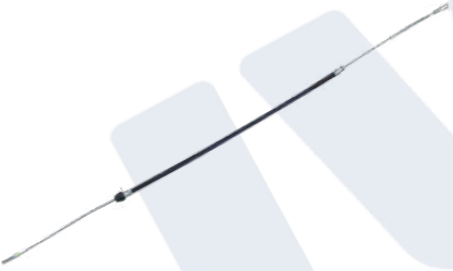
**HAND BRAKE ROPE REAR RIGHT LEFT**  
ORIGINAL NO : 4842620  
MODEL : 85 12  
LENGTH : 1.170 MM.



**HAND BRAKE ROPE REAR RIGHT LEFT**  
ORIGINAL NO : 28150  
MODEL : M 23  
LENGTH : 1.170 MM.



**HAND BRAKE ROPE REAR RIGHT**  
ORIGINAL NO : 7168831  
MODEL : 80 12 M 29 M 23 12  
LENGTH : 1.190 MM.



**HAND BRAKE ROPE REAR LEFT**  
ORIGINAL NO : 7168832  
MODEL : 80 12 M 29 M 23 12  
LENGTH : 1.780 MM.



**HAND BRAKE ROPE REAR RIGHT LEFT**  
ORIGINAL NO : 39390  
MODEL : EUROBUS  
LENGTH : 1.300 MM.



**GAS WIRE COMPLETE**  
ORIGINAL NO : 8591346  
MODEL : 65 9 85 12

# IVECO DAILY GROUP





**HAND BRAKE WIRE REAR 504003617-Y**  
**ORIGINAL NO : 504003617**  
**MODEL : 35 C 11**



**HAND BRAKE WIRE REAR 504347504**  
**ORIGINAL NO : 5802235434**  
**MODEL : 35 C 11**



**HAND BRAKE WIRE REAR 504347505**  
**ORIGINAL NO : 5802235437**  
**MODEL : 70 C 15**



**HAND BRAKE WIRE REAR 2997361**  
**ORIGINAL NO : 504082064**  
**MODEL : 65 C 15**



**HAND BRAKE WIRE REAR 504201378**  
**ORIGINAL NO : 5802258643**  
**MODEL : 35 C 35**



**HAND BRAKE WIRE REAR**  
**ORIGINAL NO : 500322988**  
**MODEL : 35 S 11**



**HAND BRAKE WIRE REAR 5801638729**  
**ORIGINAL NO : 5802259316**  
**MODEL : 35 S 11**



**HAND BRAKE WIRE REAR 5801598109**  
**ORIGINAL NO : 5802259315**  
**MODEL : 35 S 15**



**CLUTCH WIRE**  
**ORIGINAL NO : 93820871**  
**MODEL : 35 10**





**VANTILATOR WING**  
ORIGINAL NO : 5801418717  
MODEL : 70 C 17



**VANTILATOR WING**  
ORIGINAL NO : 504154349  
MODEL : 65 C 15 VH



**VANTILATOR WING**  
ORIGINAL NO : 504024647  
MODEL : 65 C 15



**EXTERIOR DOOR HANDLE RIGHT**  
ORIGINAL NO : 99489590  
MODEL : 35 C 15



**EXTERIOR DOOR HANDLE LEFT**  
ORIGINAL NO : 99489589  
MODEL : 35 C 15



**TRIGER STRAP COVER LOWER SMALL**  
ORIGINAL NO : 504010962  
MODEL : M 18



**TRIGER STRAP COVER UPPER LARGE**  
ORIGINAL NO : 504022580  
MODEL : 35.10



**WHEEL COVER OM. SMALL GRAY**  
ORIGINAL NO : 93820281  
MODEL : C11 C13



**WHEEL COVER NM. GREAT BLACK**  
ORIGINAL NO : 99477376  
MODEL : 65 C15 70 C15



**WATER FOUNTAIN NOZZLE**  
ORIGINAL NO : 5801896699  
MODEL : 35 S 11



**SWING BUSH**  
ORIGINAL NO : 5801564276  
MODEL : S 15



**SWING BUSH**  
ORIGINAL NO : 504039506-500356358  
MODEL : S 13



**FRONT TABLE BUSH SMALL**  
ORIGINAL NO : 504277459  
MODEL : 35 C 13



**FRONT TABLE BUSHING LARGE (UPPER)**  
ORIGINAL NO : 504277460  
MODEL : 50 C 13



**GEAR KNOB**  
ORIGINAL NO : 42561576-42556211  
MODEL : 35 S 11 VAN 3000



**FUEL CAP**  
ORIGINAL NO : 2993927  
MODEL : C 15



**PAD SENSOR 130 MM**  
ORIGINAL NO : 42567353  
MODEL : DAILY



**PAD SENSOR 250 MM**  
ORIGINAL NO : 42567355  
MODEL : DAILY

# mitsubishi GROUP





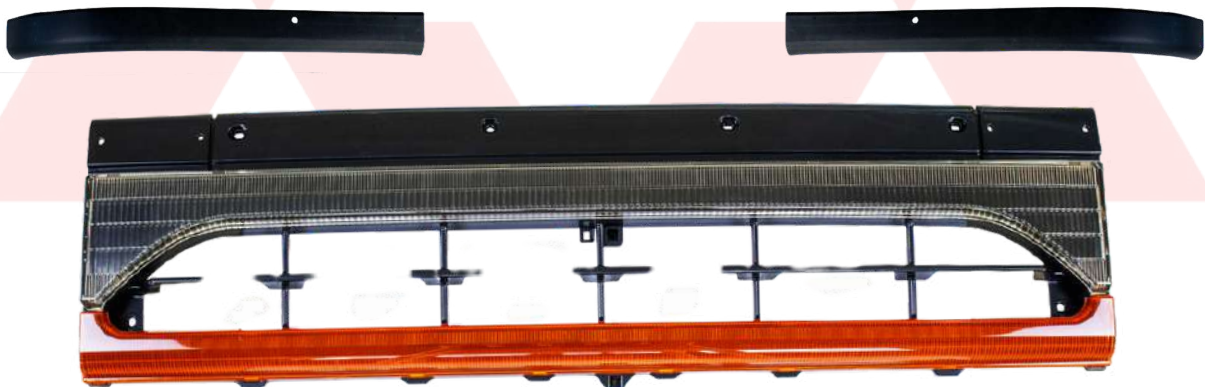
**MITSUBISHI 859 FRONT BUMPER**  
**ORIGINAL NO : MK547539**  
**MODEL : 859**



**MITSUBISHI 859 FRONT SHUTTER**  
**ORIGINAL NO : MK484837**  
**MODEL : 859**



**MITSUBISHI 659 FRONT BUMPER**  
**ORIGINAL NO : MC139301**  
**MODEL : 859**



**MITSUBISHI 659 FRONT SHUTTER**  
**ORIGINAL NO : MC139306**  
**MODEL : 659**



**MITSUBISHI 859 RIGHT STEP REFLECTOR**  
ORIGINAL NO : MK685634  
MODEL : 859



**MITSUBISHI 659 SIDE SIGNAL RIGHT**  
ORIGINAL NO: MC139775  
MODEL: 659



**MITSUBISHI 659 SIDE SIGNAL LEFT**  
ORIGINAL NO : MK139774  
MODEL : 659



**MITSUBISHI 859 LEFT STEP REFLECTOR**  
ORIGINAL NO : MK685633  
MODEL : 859



**MITSUBISHI 659 WRITING**  
ORIGINAL NO : MC142060  
MODEL : 659



**MITSUBISHI EMBLEM**  
ORIGINAL NO : MC142059  
MODEL : 659



**MITSUBISHI 859 RIGHT STEP**  
ORIGINAL NO : MK486008  
MODEL : 859



**MITSUBISHI 859 LEFT STEP**  
ORIGINAL NO : MK486009  
MODEL : 859

# ANIL OTOMOTİV

Auto Spare Parts Industry

## Anil Otomotiv

Oto Yedek Parça Sanayi



### ADDRESS:

TAHTALI MH. BURSA YOLU CD. NO:13/4  
16110 NILUFER - BURSA / TURKEY



### EMAIL :

info@aniloto.net



PHONE : +90 (224) 482 44 11



### OUR WORKING HOURS :

MONDAY-FRIDAY: 08:00 A.M.-18:00 P.M.